



[admin@qldagshows.com.au](mailto:admin@qldagshows.com.au) 07 3277 7747

P.O. Box 240 1430 Ipswich Rd, Rocklea, QLD, 4106

## Please Share this Newsletter with Your Members

Welcome to the April newsletter. While this newsletter is emailed to the Secretary, we would like it shared to as many of your members as possible. There is often content which may be of use or interest to others. Apart from Shows, we share this with stakeholders, government departments, and others. There is no confidential information in the newsletter so please share it around.

As always, we try to keep the information relevant, and articles often come from inquiries we have had during the past month.

### In this issue:

- Information statement 49 – Self Reporting Obligations
- Liquor permits
- Your show history
- Helpful links for shows
- Rides at your show
- Dark Rich Fruit Cake competition
- Show's Contact Details
- Young Judges and Paraders
- What is on our website
- Fire Ant update



## Information for Shows

The following information statement has been emailed to Secretaries on 30<sup>th</sup> April.

### Information statement 49 - Australian Taxation Department – Self Reporting Obligations

This is addressing a letter which may have been sent to shows about Not for Profit Self Review Reporting obligations. This may affect shows who are not registered with the ACNC.

Qld Ag Shows are in discussion with the ATO presently to address problems surrounding this.

The ATO has requested at this time, that Shows **DO NOT** attempt to complete the self-review when it becomes available until the issue is resolved and you are advised to complete our obligations. Further updates and advice for Shows will be provided once it is received from the ATO.





## Liquor Permits

Selling alcoholic beverages at your community event is a great way to raise funds however it is important to understand what the legal requirements are and ensure you are providing a safe environment. Under the *Work Health and Safety Act 2011* and the *Liquor Act 1992*, liquor licenses have a legal obligation to provide a safe environment for patrons, staff and the areas surrounding their licensed premises.

There are four options if you want to sell alcohol for consumption on the premises, and obtaining the correct permit or licence depends on a number of factors like whether it's a one-off event or the size of your organisation. These are

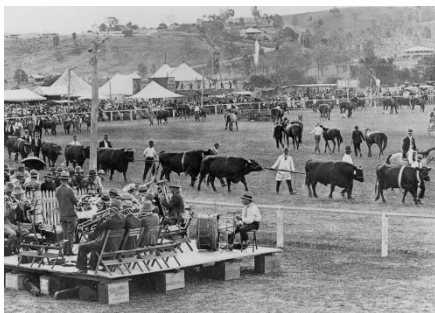
- Community Liquor Permit
- Restricted Liquor Permit
- Community Other Licence
- Community Club Licence.



Failing to have the correct permit or licence to sell alcohol may result in on-the-spot fines of up to **\$2,875**.

If you have questions or you're not sure which permit or licence is best for your club or event, contact the Office of Liquor and Gaming Regulation [OLGRlicensing@justice.qld.gov.au](mailto:OLGRlicensing@justice.qld.gov.au)

## Your Show's History



We do not have a very extensive library of show history at the Qld AG Shows Office. Both Carol and Trevor are passionate about history and the importance of recording it for future generations so we would love copies of any important history or old photos your show may have to add to our records. We also would welcome copies of compiled history books which your show may have produced such as 100-year history books.

We will often ask you for a show ribbon when we attend your show. In our board room at the Qld Ag Shows office, we have a wall displaying show ribbons from around the state. When we do a zoom meeting the backdrop of ribbons is what the other people see, which means we are showing this off to overseas contacts as well as government agencies and state bodies. We have a lot of our shows represented however we are not finished. So, if you get asked for a ribbon – it does not matter what colour or design it is or how old, we are just happy with what you can give.

We would love a photo of one of your early shows as our next project is to create a photo wall in the foyer of our office. So, if you have a digital copy that you would like to share, it would be very welcome





## Helpful Links – Show Societies

Qld Ag Shows webpage: <https://qldagshows.com.au>

Email address: [admin@qldagshows.com.au](mailto:admin@qldagshows.com.au)

Change of Details – Show Societies:

<https://www.cognitoforms.com/QueenslandAgShows/ChangeOfExecutivesForAShowSociety>

Secretaries Handbook: <https://qldagshows.com.au/resources/>

Competition forms and resources: <https://qldagshows.com.au/competitions>

Various forms including waiver forms: <https://qldagshows.com.au/resources>

How to Run a Showgirl Competition:

- Show Society: [Information & Guidelines for \(qldagshows.com.au\)](#)

- Sub-Chamber: [Information & Guidelines for \(qldagshows.com.au\)](#)



The 2024 Show Dates flyer is available on our Website in the Shows section: [Show-Dates-Flyer-2024.pdf](#)

You will also find other useful information and forms which might be handy in the future. Some of these include Fact Sheets, Insurance information, various forms and declarations, and other useful links.

Follow our Facebook & Instagram page to stay connected, inspired and up to date with all the Ag Shows across the Sunshine State.

Remember, Executive Committee Members are invited to join our Show Committee Members of Qld Ag Shows Facebook page. This is a forum for you to ask questions and share your knowledge and resources amongst other Show committees around Qld. You must apply to join, answer a few simple questions, and be accepted by the administrator. If you are not on the committee, you will not be accepted.

## Vale Graham Jensen OAM

It is with sadness that Qld Ag Shows wish to acknowledge the recent death of Graham Jensen OAM. Mr Jensen has been involved in the Showgirl competition and the Queensland Chamber of Agricultural Societies committee for many years.

He was one of the original committee members appointed to investigate the possibility of conducting a State competition for Miss Showgirl in 1982 and was the first chair of the Queensland Country Life Miss Showgirl Awards State Competition. Previous to this he was involved in the Queen of the Downs competition which was very successful on the Darling Downs.

He was honoured with the 2008 Ekka Legend award in recognition of his 60 years of service to the Royal Queensland Show (Ekka). Mr Jensen was involved in the RNA as a member, an honorary steward, a committeeman and in association with various show societies.

Qld Ag Shows offer our condolences to his family and friends.







## Dark Rich Fruit Cake State Finals & Qld's Best Dark Rich Fruit Cake

Does your show hold a Dark Rich Fruit Cake Competition?

Qld Ag Shows will hold the State Finals for the Dark Rich Fruit Cake at our office at the Rocklea Showgrounds, Brisbane on Saturday 3<sup>rd</sup> August. This competition starts at a local show level, the winners go to the Sub Chamber finals and those winners will represent their Sub Chamber at the State Finals. The cakes are then displayed at the EKKA.



Competitors use their own recipe for this competition; however, it must be a 500 gram (1lb) cake mixture with approximately 2.25kg of dried fruit using – currants (whole); sultanas and raisins (cut); mixed peel; with cherries and nuts optional. Prunes and figs are not permitted. Cake to be baked in a square 25.5cm (10 inch) tin approximate internal measurement. A new cake must be baked for the sub chamber finals and the state finals.

Sub Chamber winner's cakes must be at our office by 9am on the day of the State Finals. They can be posted, couriered, hand delivered – we have even had cakes travelling in horse trucks from western Q'ld to us. Competitors are invited to watch the cakes being judged and might even get to sample the other cakes. Cakes can be returned to the cooks after the EKKA or we can donate them to a local charity or food bank as we did last year.

**EXCITING NEWS** for this year is that Qld Ag Shows, in conjunction with the EKKA will hold a "Best of the Best Dark Rich Fruit Cake" competition to find Queensland's Best Dark Rich Fruit Cake.

This inaugural event will bring together the top 3 Dark Rich Fruit Cakes from Qld Ag Shows State Final and the EKKA cookery competition top 3 (from class 65). This competition will be judged on the Royal Queensland Cooking Stage in the Woolworths Pavilion during the EKKA and be judged by a celebrity chef.

Whose cake will be judged as "Queensland's best"?



Sub Chambers are required to have their winner's entry forms to our office by 9am Monday 1<sup>st</sup> July.

## What rides are coming to your Show?

A common question we receive is - Can you advise the type and number of amusement devices (rides) and the operators?

This request needs to be directed to the Showmen's Guild of Australasia.

We are not provided with these details as any arrangements are between the Show Society and the Guild and their members.

The Guild can be contacted at: [admin@showmensguild.com.au](mailto:admin@showmensguild.com.au)

Office phone: 07 3807 0326



## Contact Details

One of the biggest challenges our office has is contacting shows. The problem we have always faced is the accuracy of the details that we have on file for Show Societies and getting Shows to update them when they change. When we send information statements, newsletters and the like where we need to get a message out, we email to the Secretary, President, and Treasurer. Some are personal email addresses. Just last week I received a message to say that one of these people on this list had died over 12 months ago. Many others are undeliverable. Please advise the office when details are changed. The change of Executives for a Show Society form is in the resource section of our webpage. You can just click on this link to update your details.

<https://www.cognitofirms.com/QueenslandAgShows/ChangeOfExecutivesForAShowSociety>

We recommend that personal email addresses should NOT be used and that Shows and Sub-Chambers should have **secretary@, president@, admin@ style addresses**. This eases difficulties when there is a change of personnel and would ensure continuity of communication. We also recommend that a PO Box belonging to the show be used instead of a personal address.

Documents from institutions such as ATO, bank, insurance companies should not have private postal or email addresses. There is a greater risk of confidential information of the relevant Show Society being lost.

## Out and about with Qld Ag Shows

Once again, GM Trevor Beckingham, the Board of Directors and Staff have been busy visiting shows and meetings around the state.

- 3<sup>rd</sup> May – Trevor at the Wallumbilla Show
- 4<sup>th</sup> May – Jr Vice President, Monica Skerman at Kingaroy Show
- 5<sup>th</sup> May – Trevor at the St George Show
- 6<sup>th</sup> May – Trevor at the Taroom Show
- 9-11<sup>th</sup> May – Monica Skerman and Carol to help Lyndy Neal, Lorraine and Douglas Crothers with Agforce Merino Sheep and Nutrien Wool Merino Fleece 2024 Young Judges competition at Barcoo Show, Blackall.
- 13-18<sup>th</sup> May – Trevor to attend State & Provincial Association Executive Summit and State Convention in Florida USA
- 17<sup>th</sup> May – President David Wilson at Ipswich Show
- 23<sup>rd</sup> May – Trevor and Monica at Fraser Coast Show
- 25<sup>th</sup> May – Trevor at Isis District (Childers) Show
- 25<sup>th</sup> May – Carol to help judge Canungra Show Society Rural Ambassador competition
- 30-31<sup>st</sup> May – Carol to chaperone Boonah Show Society's Showgirls at Boonah Show



Various meetings with Sub Chambers, State Affiliates, Government departments and various committees are also a regular occurrence.

If you have an event that you would like a representative to attend, please do not hesitate to contact the office. If you would like us to promote your Show or Show event such as your Show Ball, please let us know and we will post on our Facebook pages for you.





## Fire Ants update

So, what makes fire ants different from other ants?

**SIZE:** Fire ants are smaller than you think! Sizes range from 2-6mm, and you'll find different sized ants in one nest. This is highly characteristic of fire ants.

**COLOUR:** Fire ants are a dark reddish-brown with a darker brown-black abdomen.

**TEMPERAMENT:** Fire ants are aggressive and very cranky if disturbed. If you happen to step on, or mow over a nest, potentially hundreds of ants will swarm and attack. They will sting repeatedly.

**NESTS:** Fire ant nests appear as mounds or flattish patches of soil with no obvious entrance holes. They can be up to 40 cm high and tend to be higher in colder weather. You're likely to spot the nest before you spot the ants.

Fire ants do resemble other species, and it is important that the experts make an ID. If you find suspect ants, please do not attempt to destroy them. Safely photograph them and send images for assessment.

### AT YOUR SHOW – POTTED PLANTS, HAY AND FODDER

If you are in a Fire Ant Zone, that is the Southeast Qld area – Zones 1 and Zone 2 - you may need to rethink how you manage potted plants, hay, and fodder. Check the Fire Ant movement tool on the Fire Ant Website.

**Fodder and Hay** brought into your grounds by competitors should be taken home with them when they are from outside your area.

**Agricultural displays or competitions** – consider spraying the area and display on a hard surface above the ground.

**Potted plants** can be moved to another place for 24 hours. For pavilion Horticulture sections consider spraying the area and placing potted plants on a hard surface off the ground. Have a look at the potting mix and if you suspect it is odd consider not allowing it to be in the competition. Check the Fire Ant website movement tool on the Fire Ant Website.

**Some shows have a clause in their nomination forms declaring the competitor has read and abides by the current fire ant advice.**

The Qld Fire Ant eradication team have prepared training and tools on their website which may be helpful for you. They are also available by phone and may be able to provide an information stand at your show. If you have any concerns, please contact them.

In the meantime, visit <https://www.fireants.org.au/> for up to date information. This is updated at least monthly



NATIONAL

**Fire Ant Eradication**

PROGRAM

1. Overview of materials that can carry fire ants  
<https://www.fireants.org.au/treat/business-and-industry/materials-that-can-carry-fire-ants>
2. Managing bales materials:  
<https://www.fireants.org.au/treat/business-and-industry/materials-that-can-carry-fire-ants/hay-management>
3. Fire Ant Movement advice tool  
<https://www.fireants.org.au/treat/business-and-industry/movement-advice-tool>
4. General biosecurity obligation  
<https://www.fireants.org.au/treat/business-and-industry/general-biosecurity-obligation>
5. Potted plant management <https://www.fireants.org.au/treat/schools-sports-grounds-and-public-spaces/materials-that-can-carry-fire-ants/potted-plant-management>



## Young Judges and Paraders



The **Agforce Merino Sheep 2024 Young Judges** and **Nutrien Wool Merino Fleece 2024 Young Judges** competition was held at the Barcoo Show in Blackall on Saturday 11<sup>th</sup> May. This is held in conjunction with the QMSSA State Sheep Show. Lorraine and Douglas Crothers and Lyndy Neal coordinated the event with help on the day from Monica Skerman, Young Judges and Paraders State coordinator and Carol Cahill from the Qld Ag Shows office. It was a very strong competition with 8 competitors in each. We thank our sponsors and judges, QMSSA State Sheep Show and Barcoo Show for their help.

A reminder to secretaries to send their winner and runner up forms from competitions immediately following the Show competition. Please ensure you are using the correct entry forms which can be downloaded from our website and that they are filled in correctly and legible. If they are not on the correct form or details can't be read, they will be returned.

Stud Beef Young Judges and Paraders, Prime Beef Young Judges - Please ensure that entry forms are sent to your Sub Chamber for processing for Sub Chamber finals.

Dairy Young Judges and Paraders, Poultry Young Judges and Meat Sheep Young Judges are sent to the Qld Ag Shows Office [admin@qldsagshows.com.au](mailto:admin@qldsagshows.com.au)

2024 State Finals dates are –

Dark Rich Fruit Cake – Qld AG Shows Office, Rocklea, Saturday 3<sup>rd</sup> August

Prime Beef Cattle – EKKA, 6<sup>th</sup> August

Stud Beef Young Judges and Paraders - EKKA, 8<sup>th</sup> August

Poultry Young Judges – EKKA, 11<sup>th</sup> August

Queensland Country Life Showgirl – EKKA 6-11<sup>th</sup> August

Rural Ambassador – EKKA 7-12<sup>th</sup> August

Dairy Young Judges and Paraders – Beaudesert Show, 7<sup>th</sup> September



Queensland  
**YOUNG JUDGES  
& PARADERS**

All entry forms for **State Finals Nominations** close at 9am Monday 1<sup>st</sup> July for the above-listed competitions.

## National ASA Young Judges and Paraders Championships 2024

The National Finals for our Young Judges and Paraders and Rural Ambassador will be held at the Royal Melbourne Show from 28<sup>th</sup> September to 6<sup>th</sup> October 2024. Ten competitors from the Queensland State Finals will compete with other states.

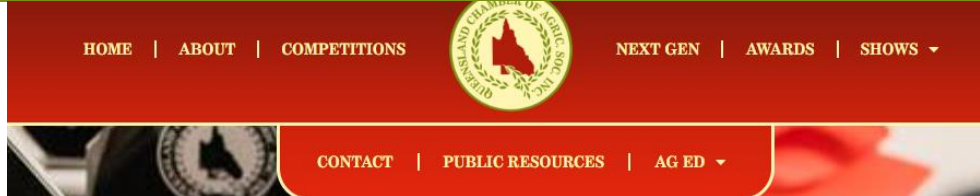
All competitors will have received information on accommodation and travel reimbursement in April.







## What is on our website?



**ABOUT** – this is a basic overview of Qld Ag Shows. You will find the Board of Directors, Patron, Stakeholders and the Rules of the Association and Bylaws.

**COMPETITIONS** – here you will find all the forms and resources you will need for Young Judges & Paraders, Showgirl, Rural Ambassador and Dark Rich Fruit Cake.  
Sub Chamber Finals, State Finals and National Finals dates and venues.

### SHOWS

Show dates and contacts  
Sub Chamber contacts  
State Finals information

**Closed Show Resources** – this has all the competition rules and regulations, fact sheets, information statements, insurance information, forms, Change of details for Shows and Sub Chambers  
– If you are looking for something you will probably find it here. You can type into the search bar for scroll through. If you cannot find what you are looking for just drop us a line.

**Contact** – contact details for Qld Ag Shows – phone numbers and email addresses.

**Public Resources** (still under development). This will have any information for competitors and members of the public.

**Ag Ed (Agricultural Education and Ag Shows.)** this will be a resource package for shows and schools to use. It will have information on Innovations from our Qld Shows and those from IAFE (International Association of Fairs and Expos), as well as how Ag-Ed programs/show opportunities for schools can link to the Australian Curriculum, and Ag-Ed in general. This will include resources for Shows, Educators, and Young Judges and Paraders. Please note – this is a work in progress.

## Insurance updates – please consider

- Exposed cords running across the grounds - although very easy to see during the day but may be a trip hazard once the sun goes down. Suggest either mats with reflective tape or if additional lighting can be provided. Would also be good for the roving announcer to remind patrons of these.
- First Aid centre – Is this easy to locate? Is there signage?
- Fires (cooking/blacksmithing etc) need to have a protective barrier and firefighting equipment close by.
- Wet weather – make sure paths, toilets, etc which could become slip hazards have a much more regular cleaning regime to mop up the excess water and mud on the floors.
- Ideally no vehicle movement should be allowed once public entry is permitted but if this is unavoidable then they need to be instructed how to enter safely and with little risk of patron injury





# Queensland Ag Shows

